

Dry Areas - Medium Duty Industrial

# Dyna-Shield™

Exceptional worker comfort due to 12.7 mm thick specially formulated compound. Protective layer of exclusive Dyna-Shield™ extends service life by 50% compared to regular microcellular vinyl\*. Available with yellow borders along sides comply with OSHA code 1910-144. All 4 sides are bevelled and sealed to minimize tripping hazards.

**Recommended uses:**

- Medium duty - dry areas

**Specifications:**

- Slip resistance R10 according to DIN51130
- Thickness: 12.7 mm
- Weight: 4 kg per m<sup>2</sup>
- Free of DOP, free of DMF, free of ozone depleting substances, free of silicone and free of heavy metals

**Stock sizes:**

- 60 cm x 91 cm
- 91 cm x 150 cm

**Full rolls 18.3 m:**

- 60 cm, 91 cm, and 122 cm widths

**Custom lengths:**

- 60 cm, 91 cm, and 122 cm widths

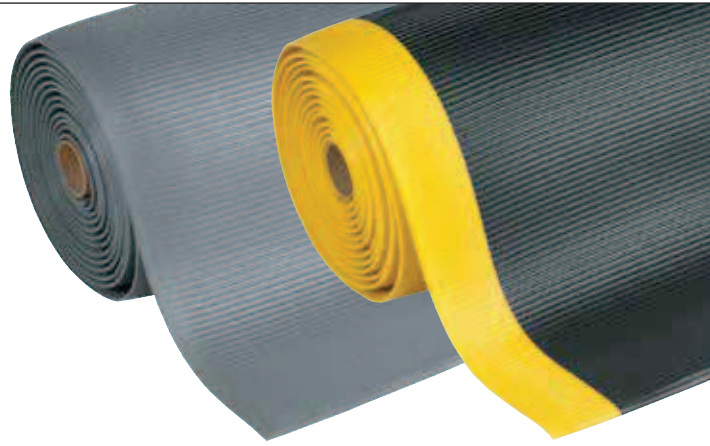
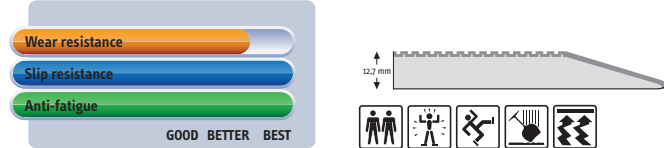
\* Supported by independent laboratory testing.



## 406 Crossrib Sof-Tred™

- Side-to-side wide ribs provide traction and easy to sweep clean
- Colours: Black/yellow, Grey

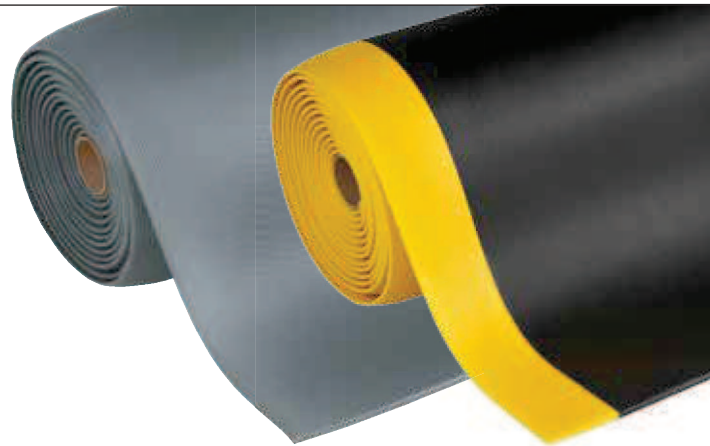
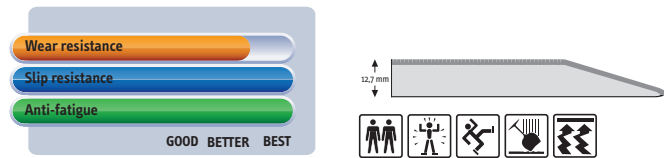
### PRODUCT TESTING



## 413 Gripper Sof-Tred™

- Lengthwise corrugated rib pattern for sure footing
- Colours: Black/yellow, Grey

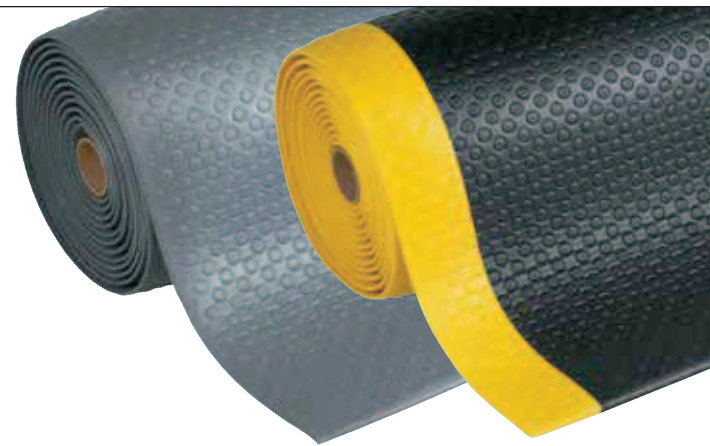
### PRODUCT TESTING



## 417 Bubble Sof-Tred™

- Unique bubble design provides exceptional comfort
- Colours: Black/yellow, Grey

### PRODUCT TESTING



## 419 Diamond Sof-Tred™

- Non-directional "Deck Plate" pattern allows freedom of movement
- Colours: Black/yellow, Grey, Black

### PRODUCT TESTING

